

# Confederated Tribes of Warm Springs

Branch of Natural Resources



# Who We Are

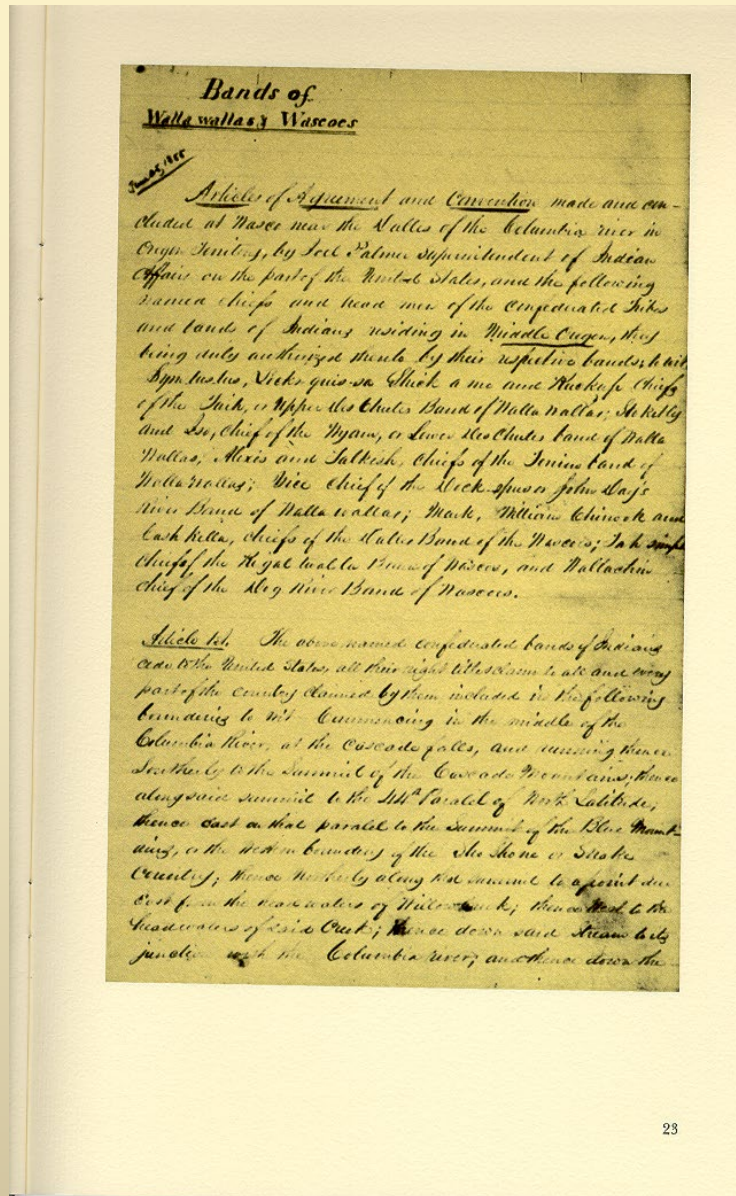


**Dip net fishing at Celilo Falls**

- There are three tribes that make up the Confederated Tribes of Warm Springs - Warm Springs, Wasco and Paiute
- The Warm Springs and the Wasco people are from the Columbia River. The Paiute people come from the plateaus to the southeast of the Columbia River.



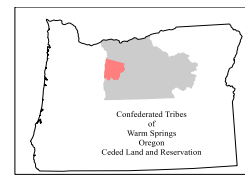
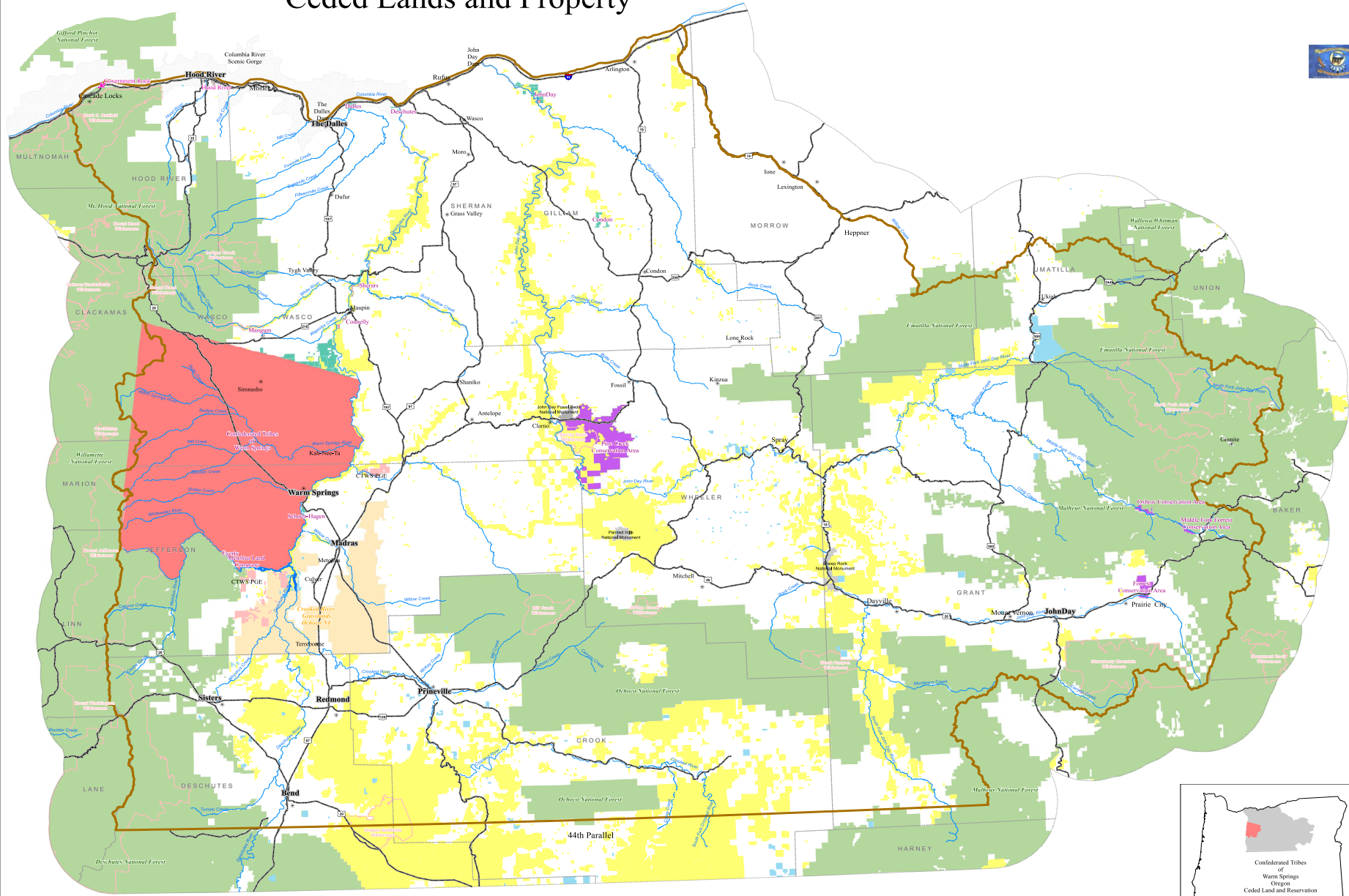
# Treaty Of 1855



- A treaty was signed with the US Government on June 25, 1855.
- The treaty reserved the right to fish, hunt, gather foods and pasture livestock in the ceded lands, and at usual and accustomed sites.

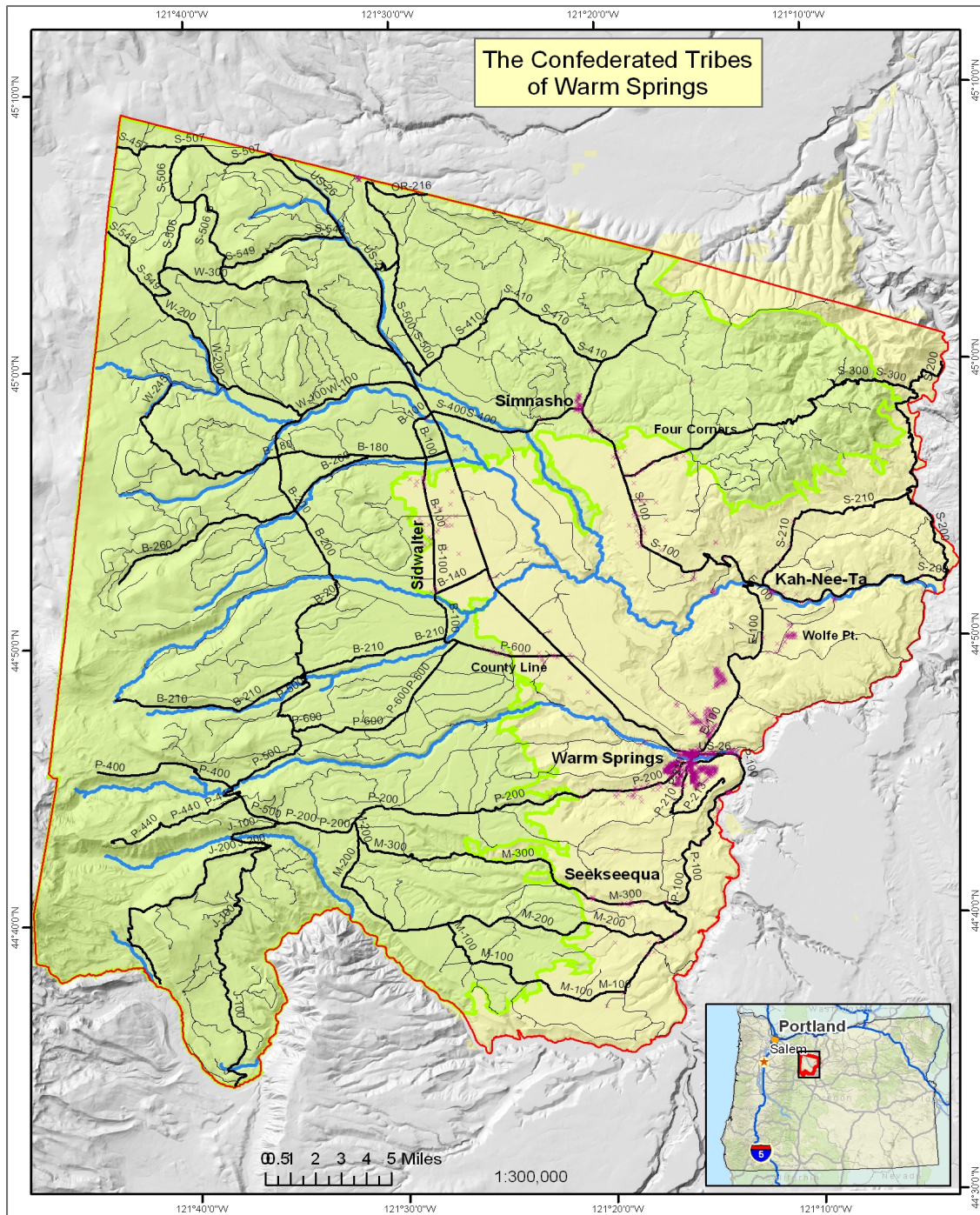
# The Confederated Tribes of Warm Springs Ceded Lands and Property

© down the channel of the Columbia River to the place of beginning.





# The Confederated Tribes of Warm Springs





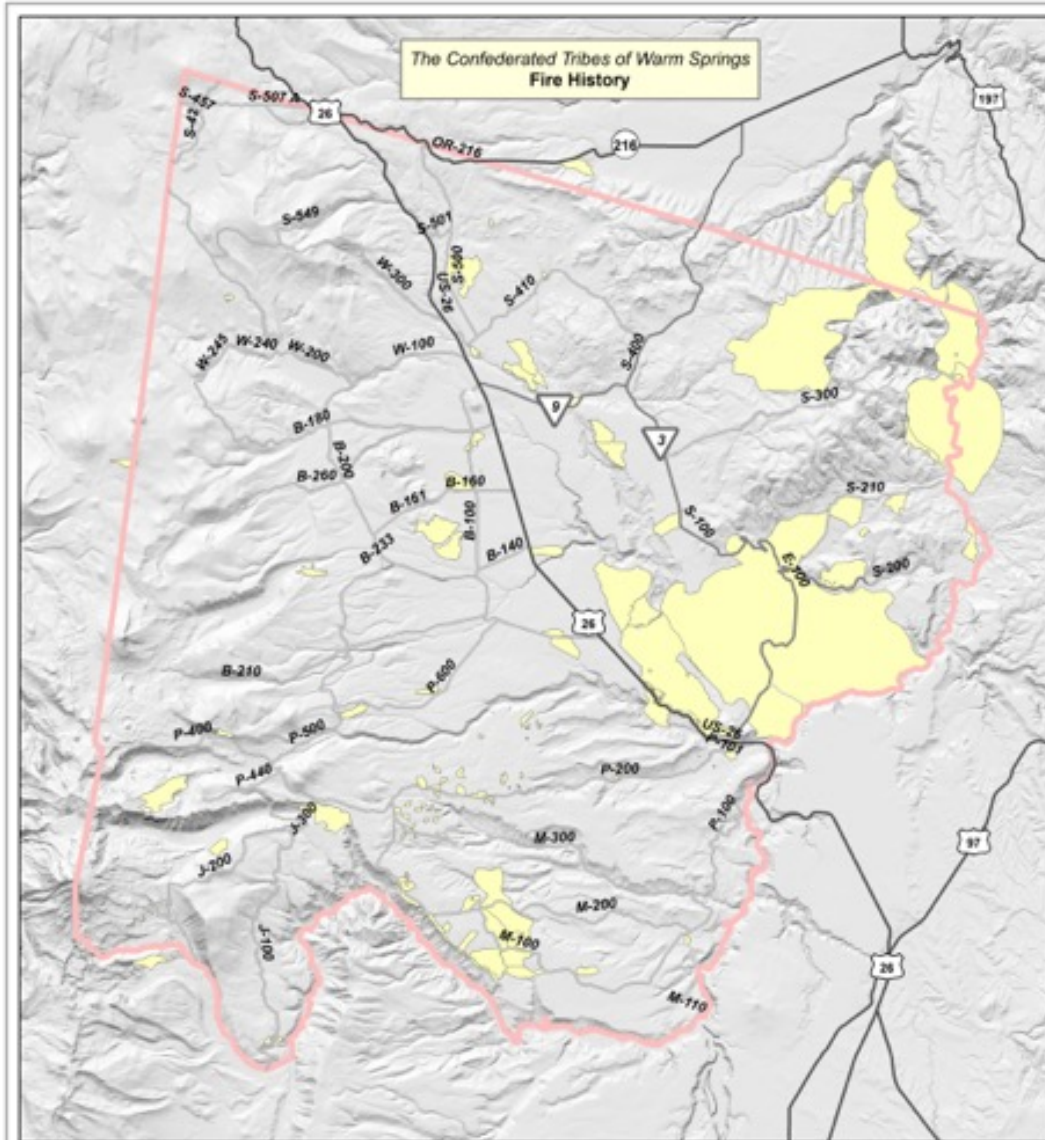






P 500  
P530





1960-1994  
 Warm Springs

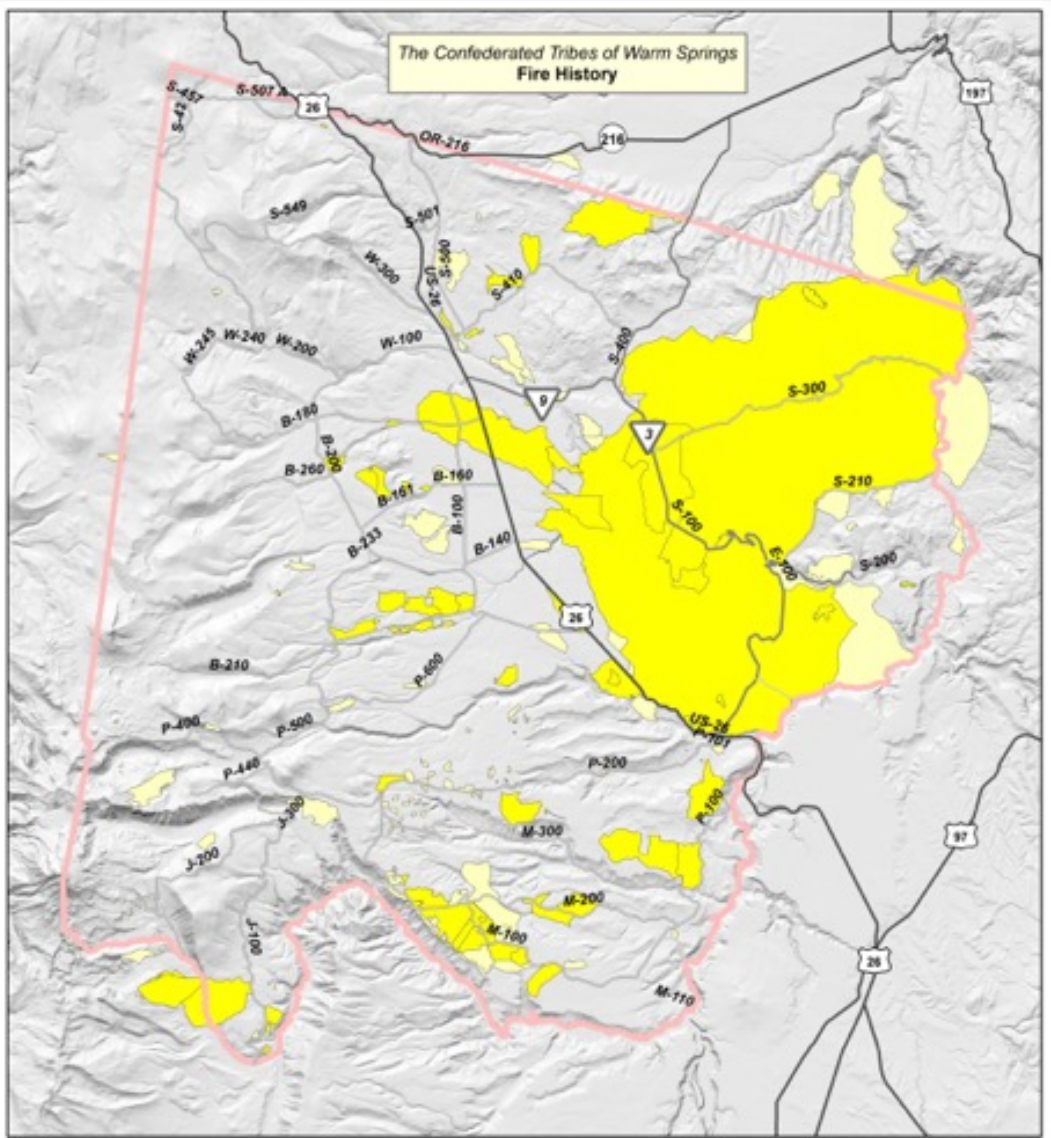


CTWS GIS Center ms  
09/23/2016

1:336,600

0 1 2 4 6 8 Miles

The Confederated Tribes of Warm Springs  
Fire History



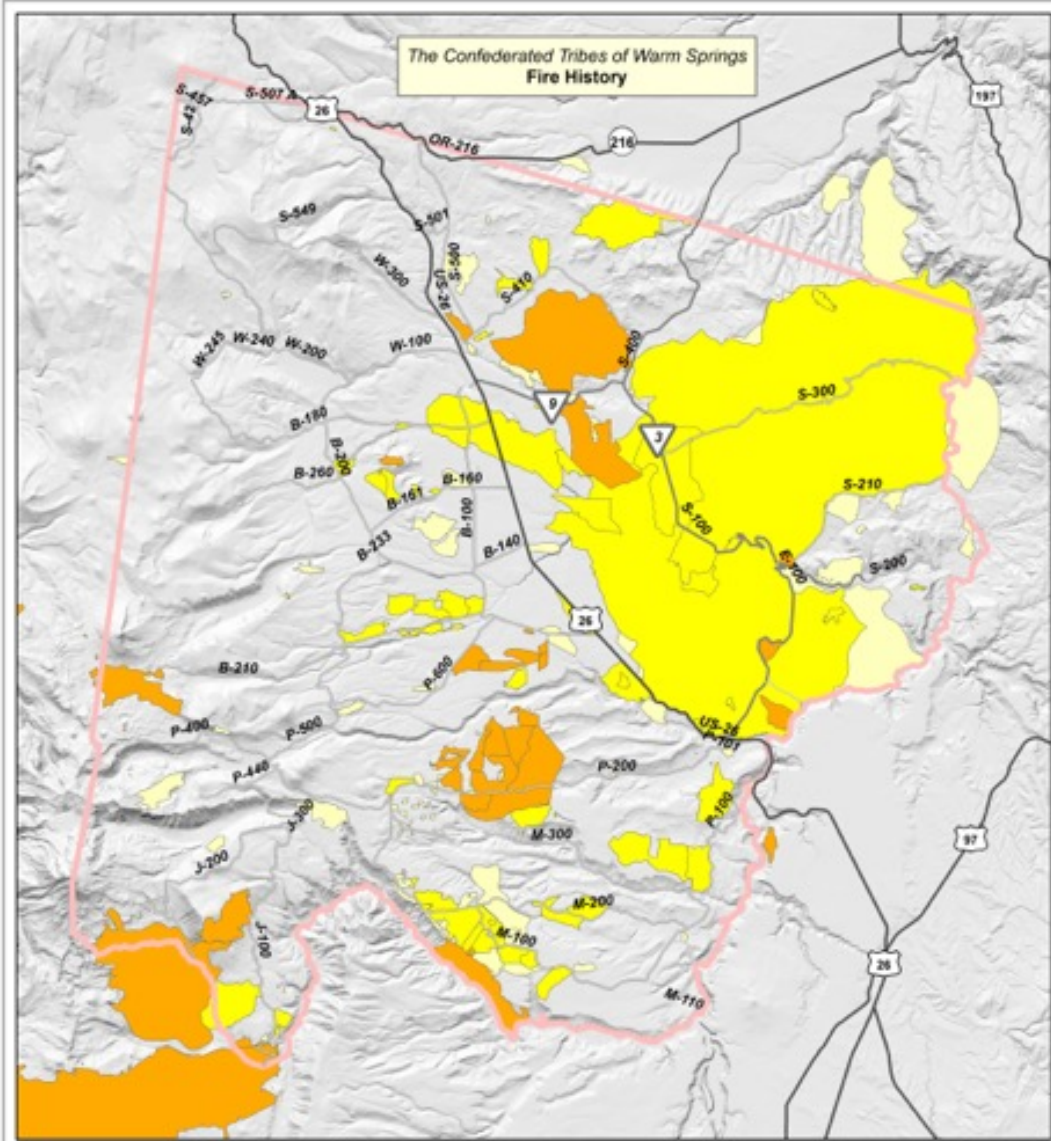
- 1995-1999
- 1960-1994
- Warm Springs



CTWS GIS Center ms  
09/23/2016

1:336,600





The Confederated Tribes of Warm Springs  
Fire History



- 2000-2004
- 1995-1999
- 1960-1994
- Warm Springs



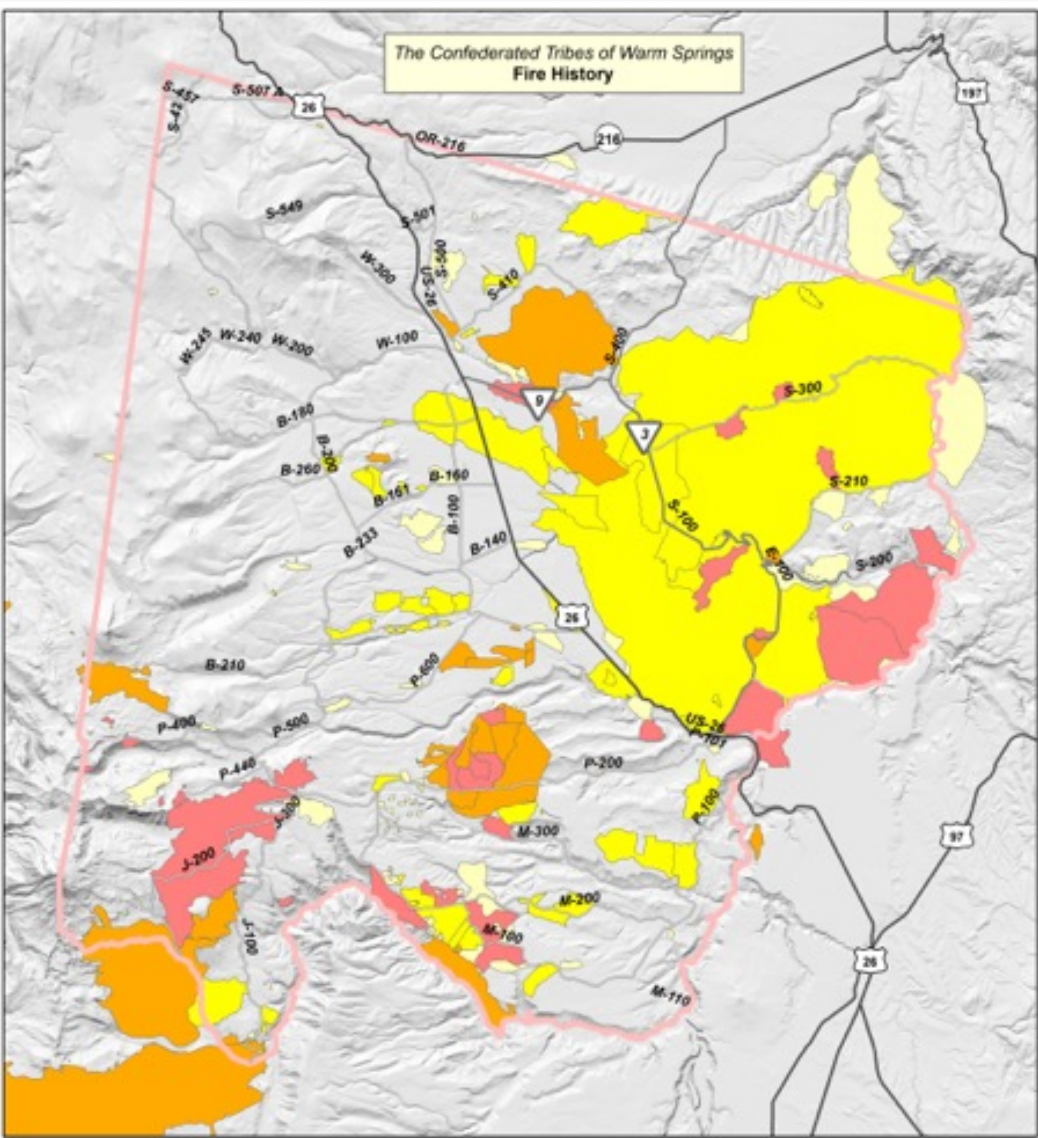
CTWS GIS Center ms  
09/23/2016

1:336,600





The Confederated Tribes of Warm Springs  
Fire History



- 2005-2009
- 2000-2004
- 1995-1999
- 1960-1994
- Warm Springs

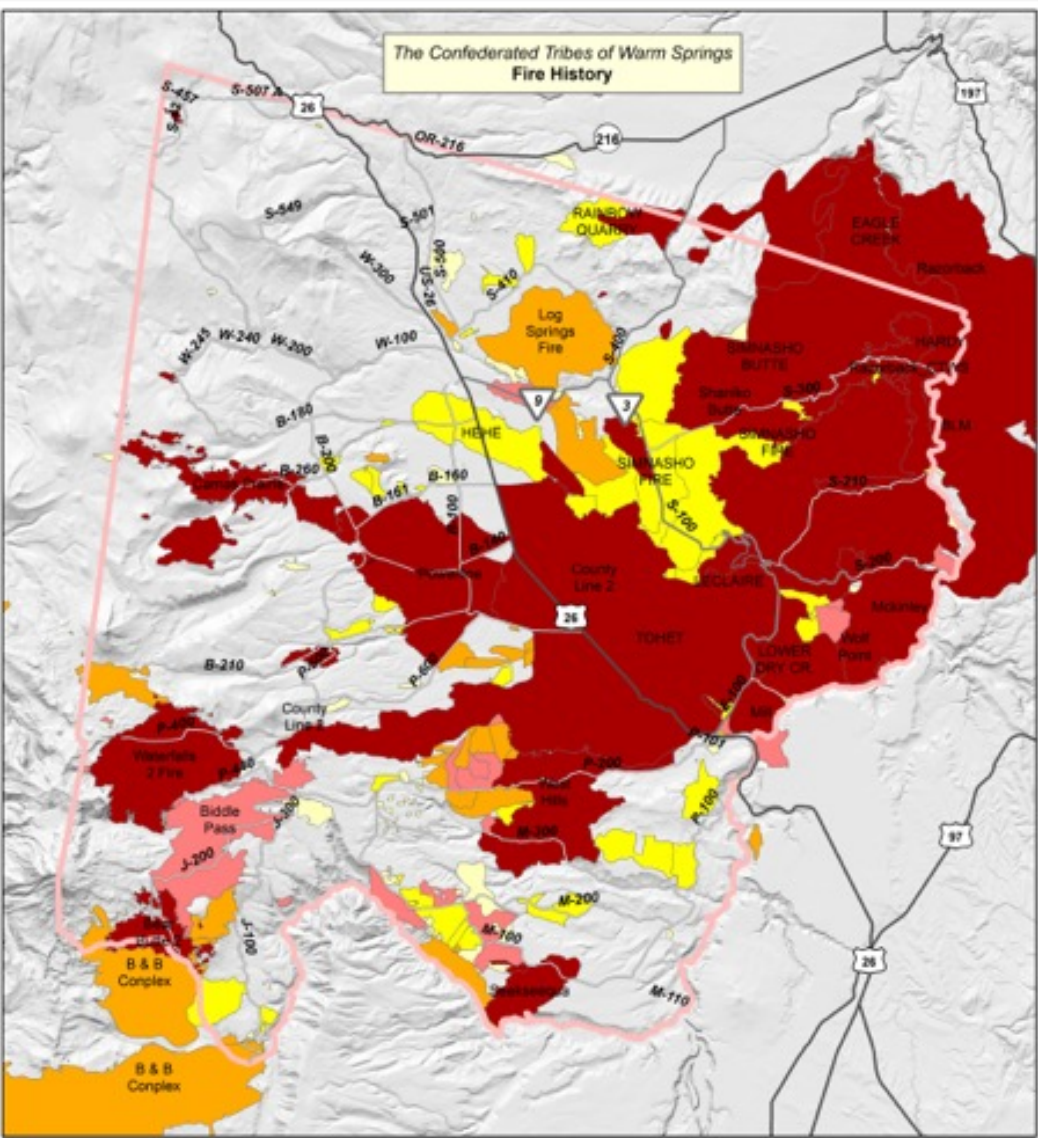


CTWS GIS Center ms  
09/23/2016

1:336,600



The Confederated Tribes of Warm Springs  
Fire History



- 2010-2016
- 2005-2009
- 2000-2004
- 1995-1999
- 1960-1994
- Warm Springs

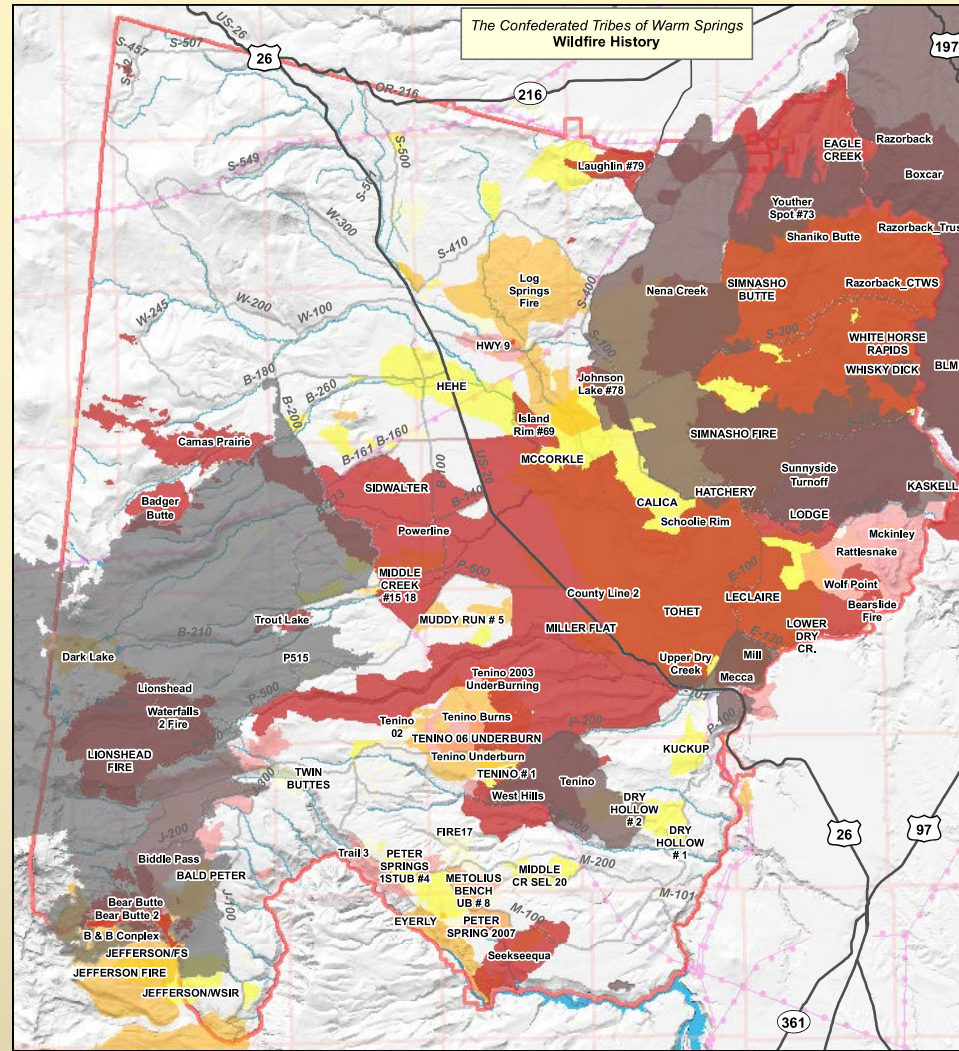


CTWS GIS Center ms  
09/23/2016

1:336,600







The Confederated Tribes of Warm Springs  
Wildfire History

included.  
Overlapping layer transparency will cause color blending.)

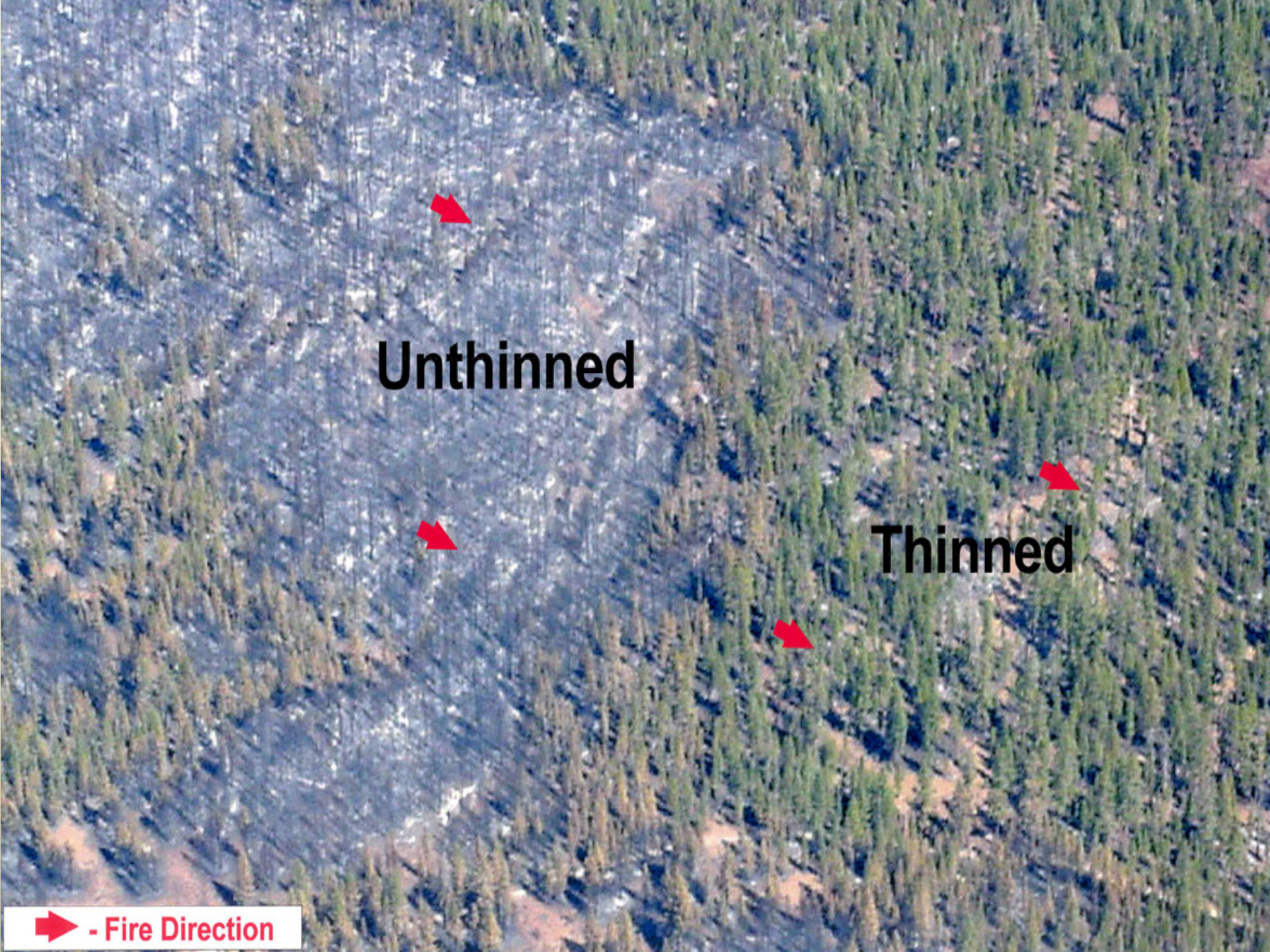


# What is next?

- Shift focus to restoration forestry
- Removing small trees depends on funding
- Landscape scale multi-stage fuels reduction projects (thin small trees, mow brush, prescribed burning)
- Tribes have 24,000 acres in a Carbon Sequestration Project. 15,000 acres are in the fire boundary of Lionhead.
- Climate Change and how do we manage in the future?







**Unthinned**

**Thinned**

 - Fire Direction